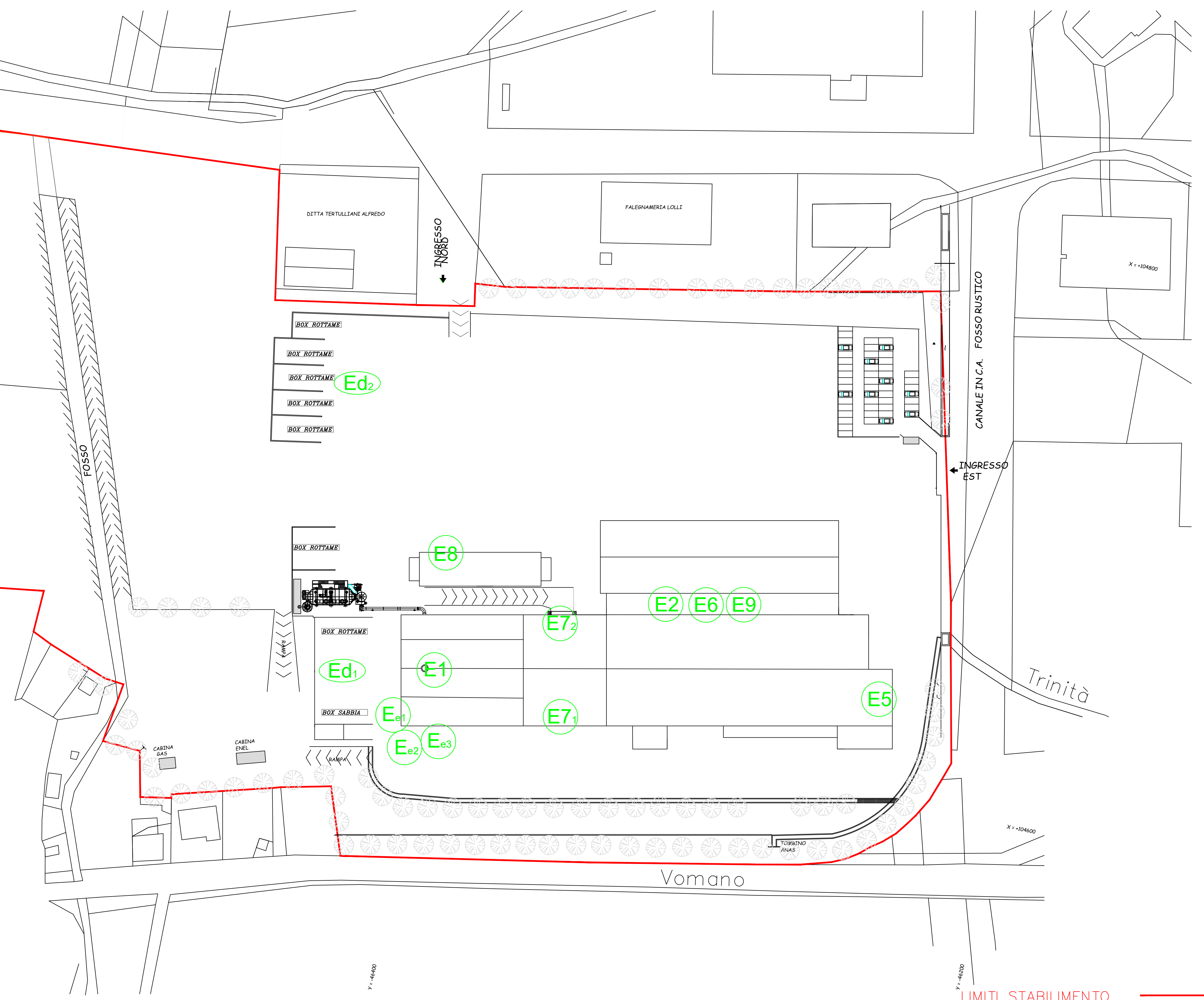
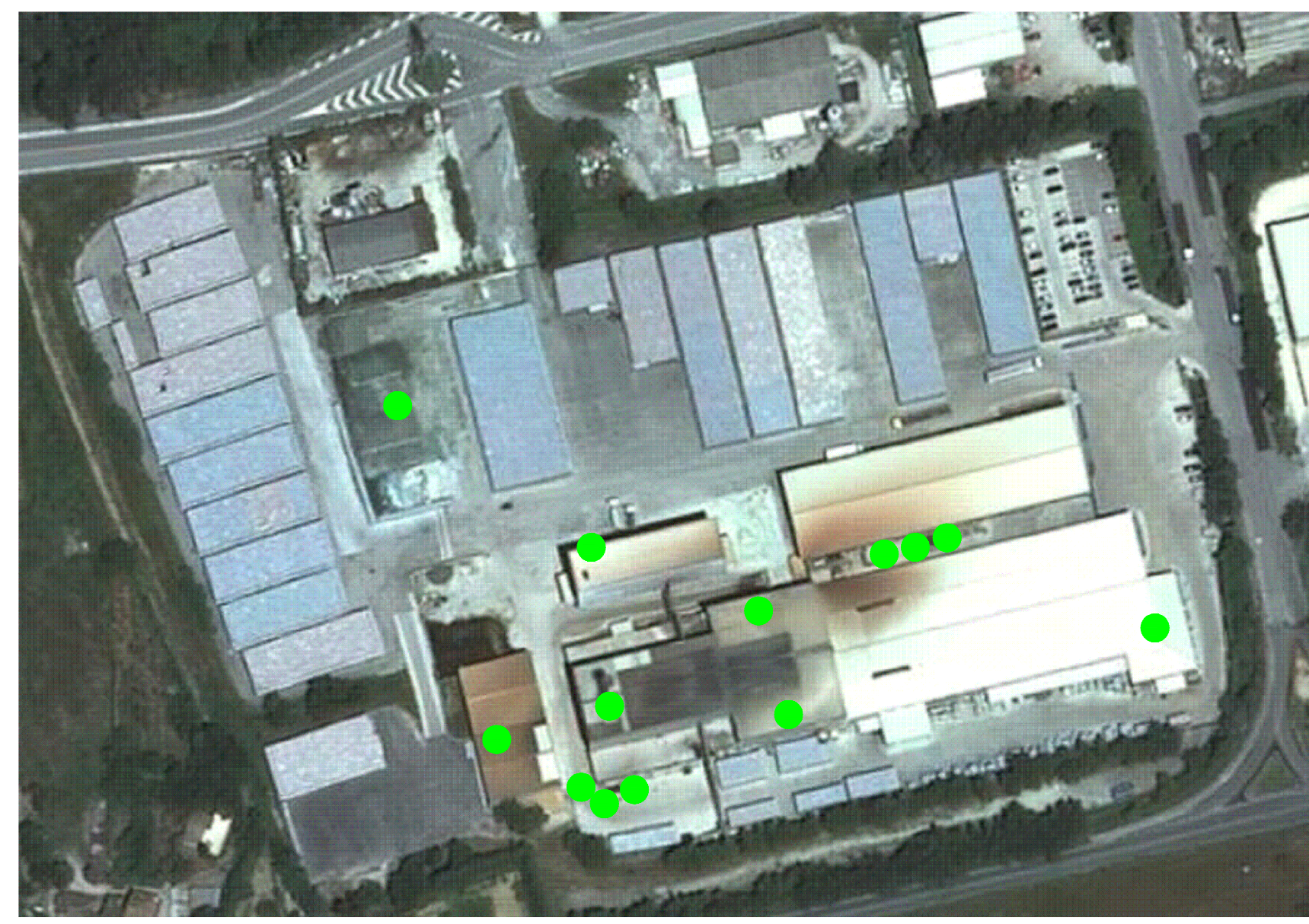


- E1** FORNO FUSORIO E TRATTAMENTO A CALDO
- E2** FORNI DI RICOTTURA
- E5** IMBALLO
- E6** SALDATURA
- E7₁** FORNO RISCALDO STAMPI L.1.1
- E7₂** FORNO RISCALDO STAMPI L.1.2
- E8** MAGAZZINO MATERIE PRIME
- E9** LAVAGGIO STAMPI
- E_{ei}** GRUPPI ELETTROGENI DI EMERGENZA 1, 2, 3
- Ed_i** EMISSIONI DIFFUSE
Ed1: stoccaggio sabbia silicea confinato su tre lati e superiormente
Ed2: stoccaggio rottame di vetro confinato su tre lati



LIMITI STABILIMENTO

This design is neither sold nor given but loaned. It is copyright and remains the property of -
ArdaghGlass © 2007
 It is strictly confidential and must not be copied or reproduced without permission and is subject to recall.

REV	DATE	REVISION	REV BY	REV	DATE	REVISION	REV BY
A							

ARDAGH GLASS
 TECHNICAL SERVICES
 HEADLANDS LANE
 KNOTTINGLEY
 WEST YORKSHIRE WF11 0HP
 TEL: + 44 (0) 1977 674111
 www.ardaghglass.com

DRAWN	CTS	DATE	02_20
CHECKED	EHS	DATE	03_20
APPROVED	DIRECTOR	DATE	03_20
PROJECT	MAV20		
PARENT	-		
SIZE A.1			

TITLE		PLANIMETRIA	
		STABILIMENTO	
		EMISSIONI CONVOGLIATE DIFFUSE	
SCALE	DRG. No	SCALE	REV
	MAV20_AIR_EMISSIONS		0