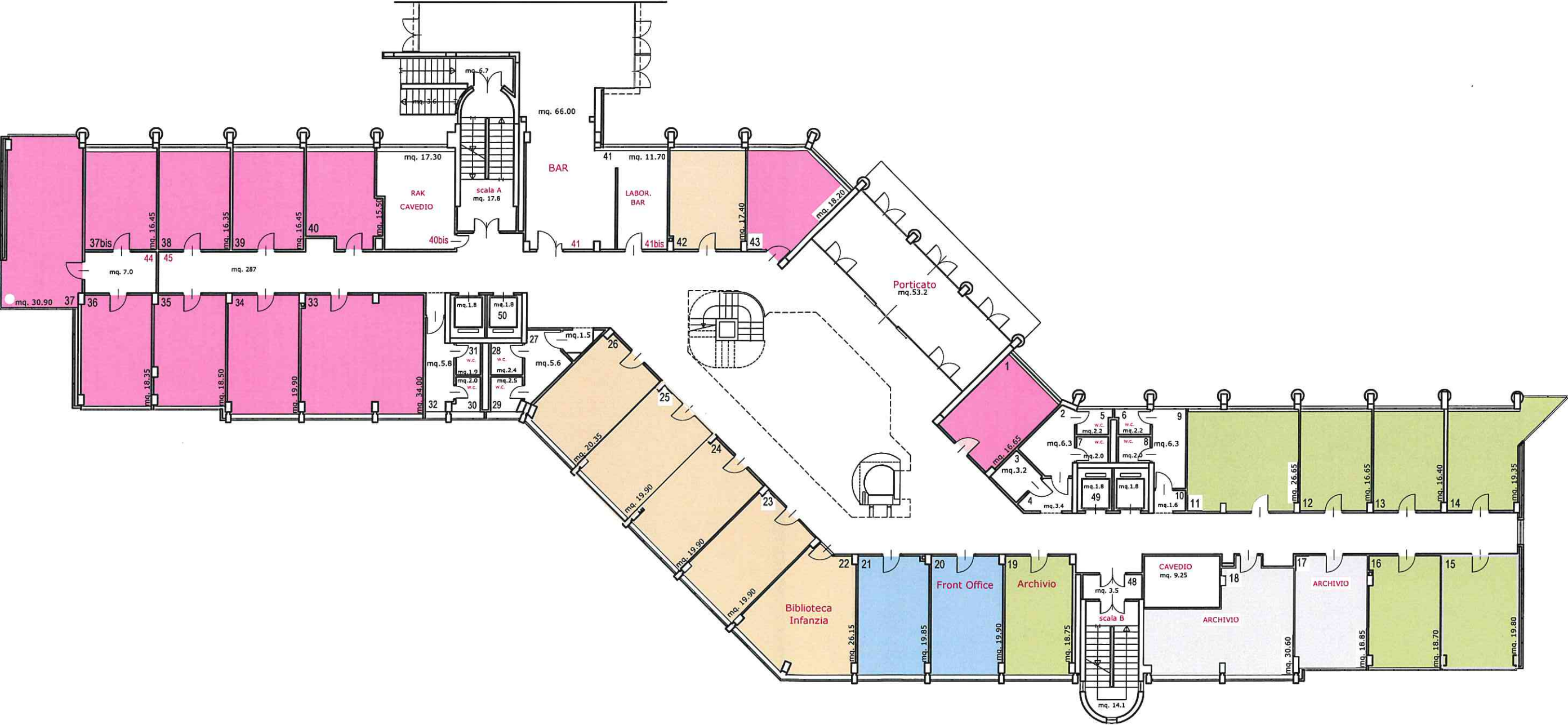


EDIFICIO VIA SALARIA ANTICA EST

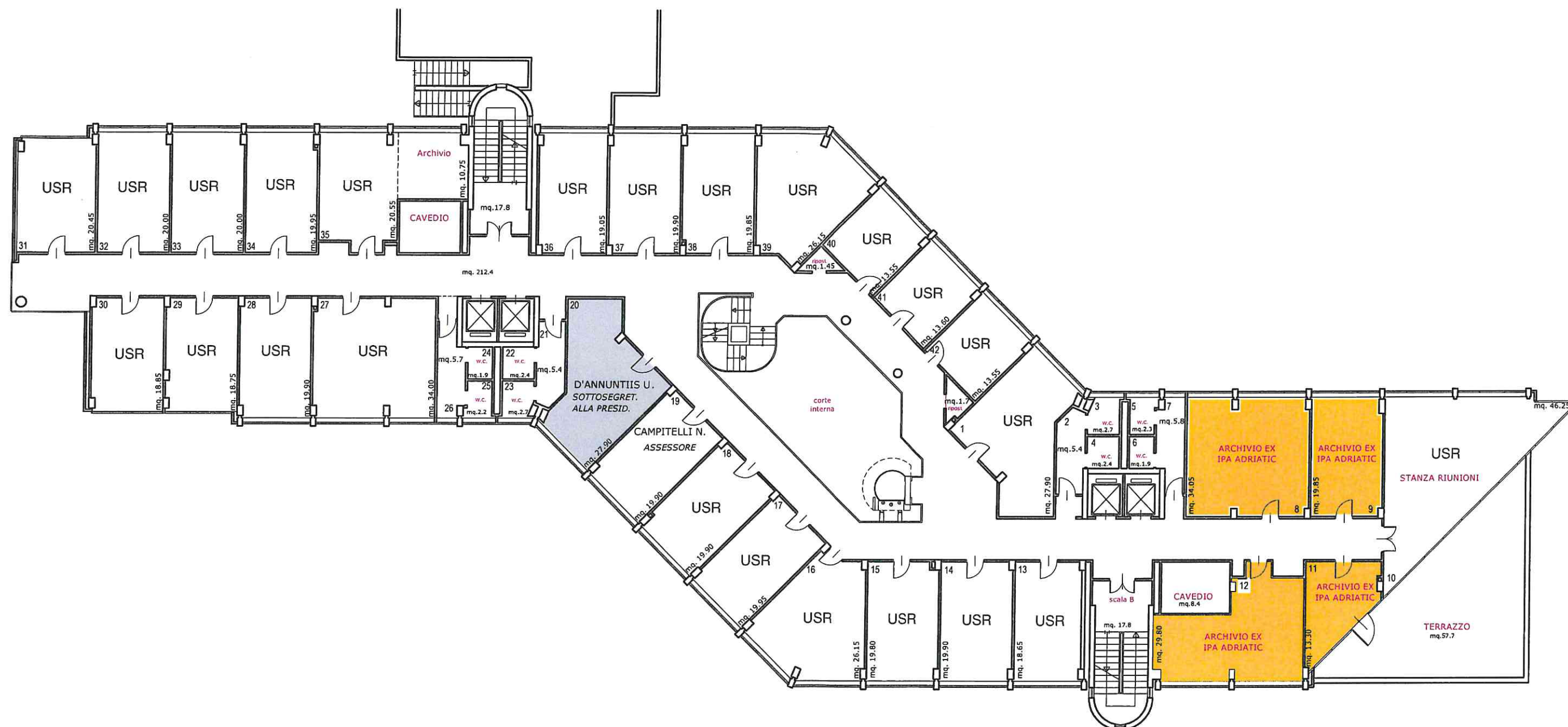
PIANTA PIANO TERRA



- DPE - Dipartimento Infrastrutture - Trasporti
- DPH - Dipartimento Sviluppo Economico - Turismo
- DPD - Dipartimento Agricoltura - Front Office Ufficio UMA
- Archivio Commissario Bussi
- DPC - Protezione Civile

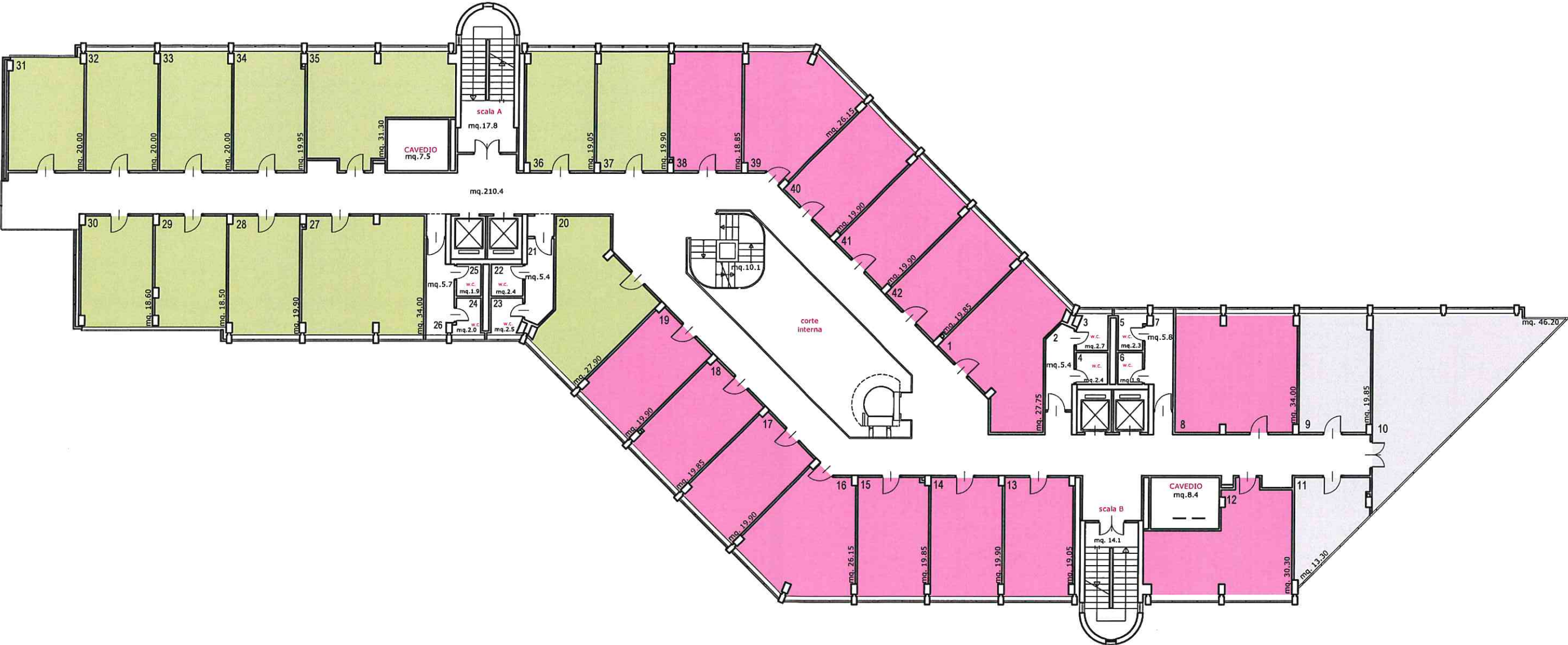
EDIFICIO VIA SALARIA ANTICA EST

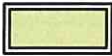

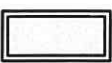
PIANTA PIANO PRIMO



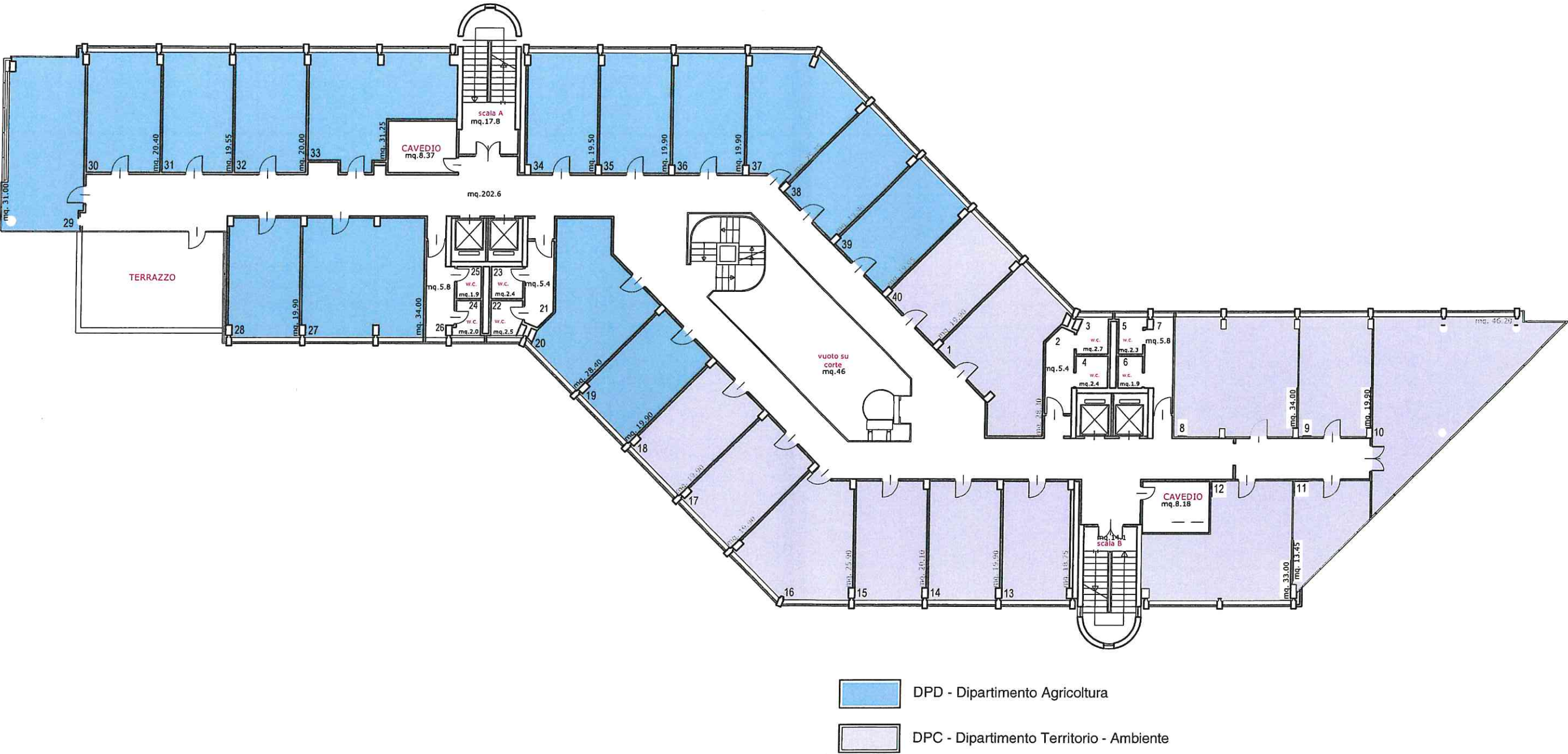
- Nicola Campitelli - Assessore
- Umberto D'Annunziis - Sottosegretario alla Presidenza della Giunta regionale
- DPA - Dipartimento Presidenza
- USR - (UFFICIO SPECIALE RICOSTRUZIONE)

EDIFICIO VIA SALARIA ANTICA EST
PIANTA PIANO SECONDO

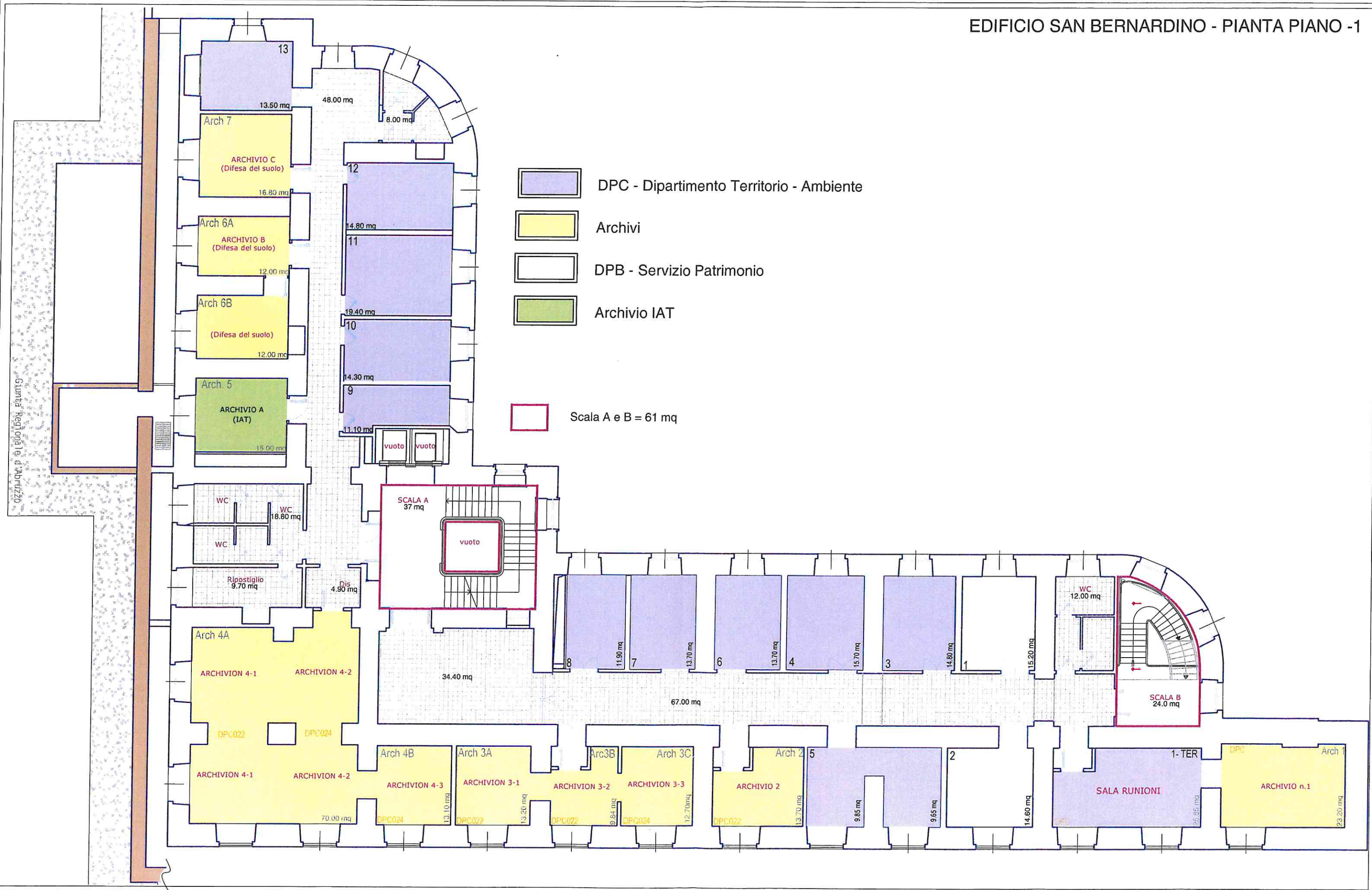


-  DPE - Dipartimento Infrastrutture - Trasporti
-  DPC - Protezione Civile
-  Emanuele Imprudente - Vicepresidente e Assessore






EDIFICIO VIA SALARIA ANTICA EST
PIANTA PIANO TERZO



EDIFICIO SAN BERNARDINO - PIANTA PIANO -1



PALAZZO IGNAZIO SILONE - Via L. Da Vinci n.6
CORPO - A - PIANO TERZO

-  VICE PRESIDENTE E ASSESSORE EMANUELE IMPRUDENTE
-  CAP - CONTROLLI E ANTICORRUZIONE
-  DPA - DIPARTIMENTO PRESIDENZA
-  DPB - Servizio Patrimonio
-  Commissario Gran Sasso

