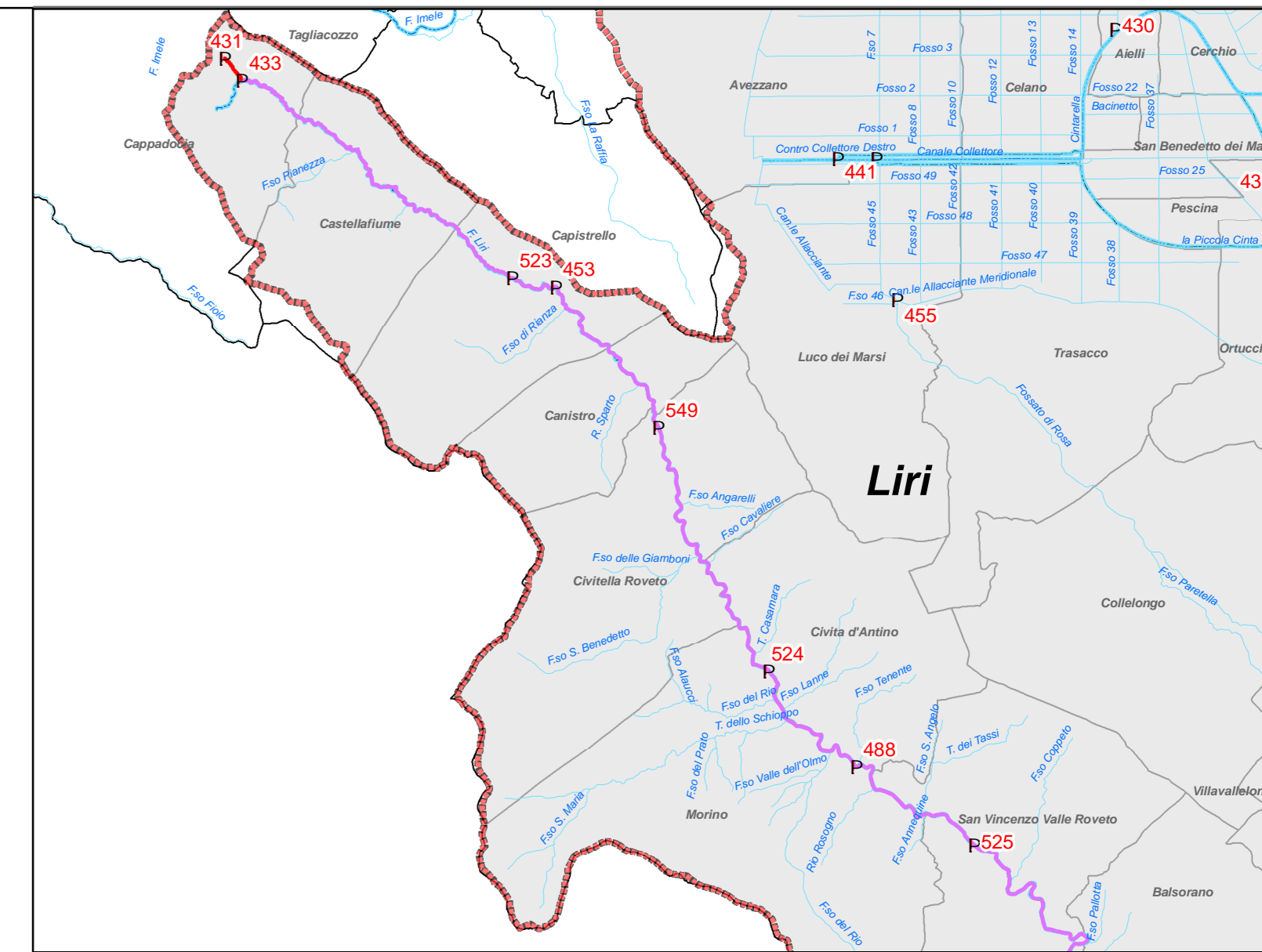
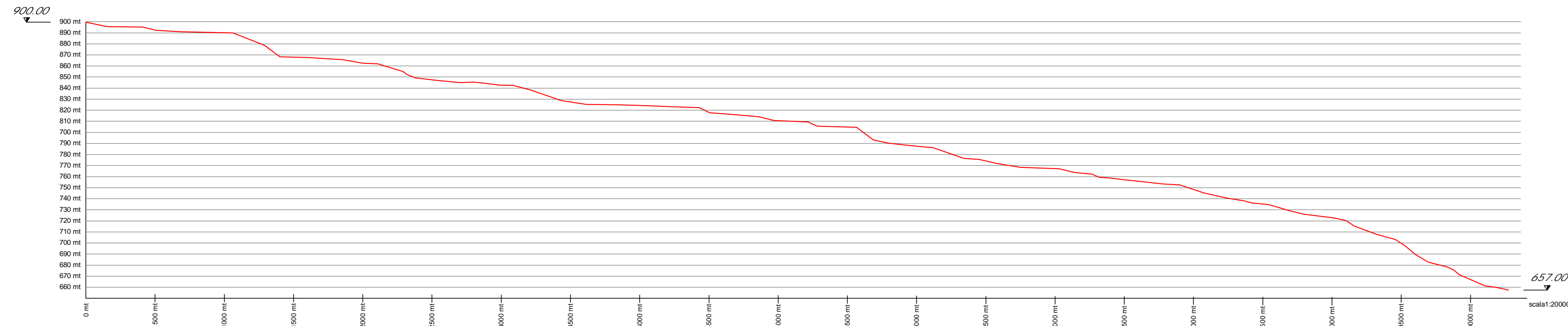
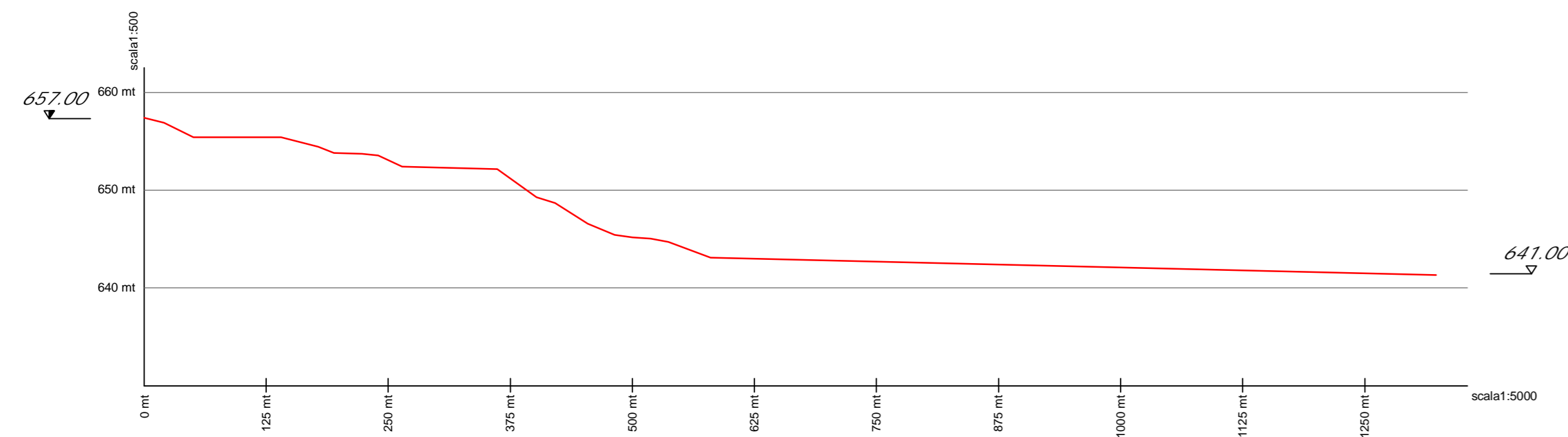


PROFILO nodo 433 - 523  
Salto mt. 243.00 Lunghezza mt. 10285.68

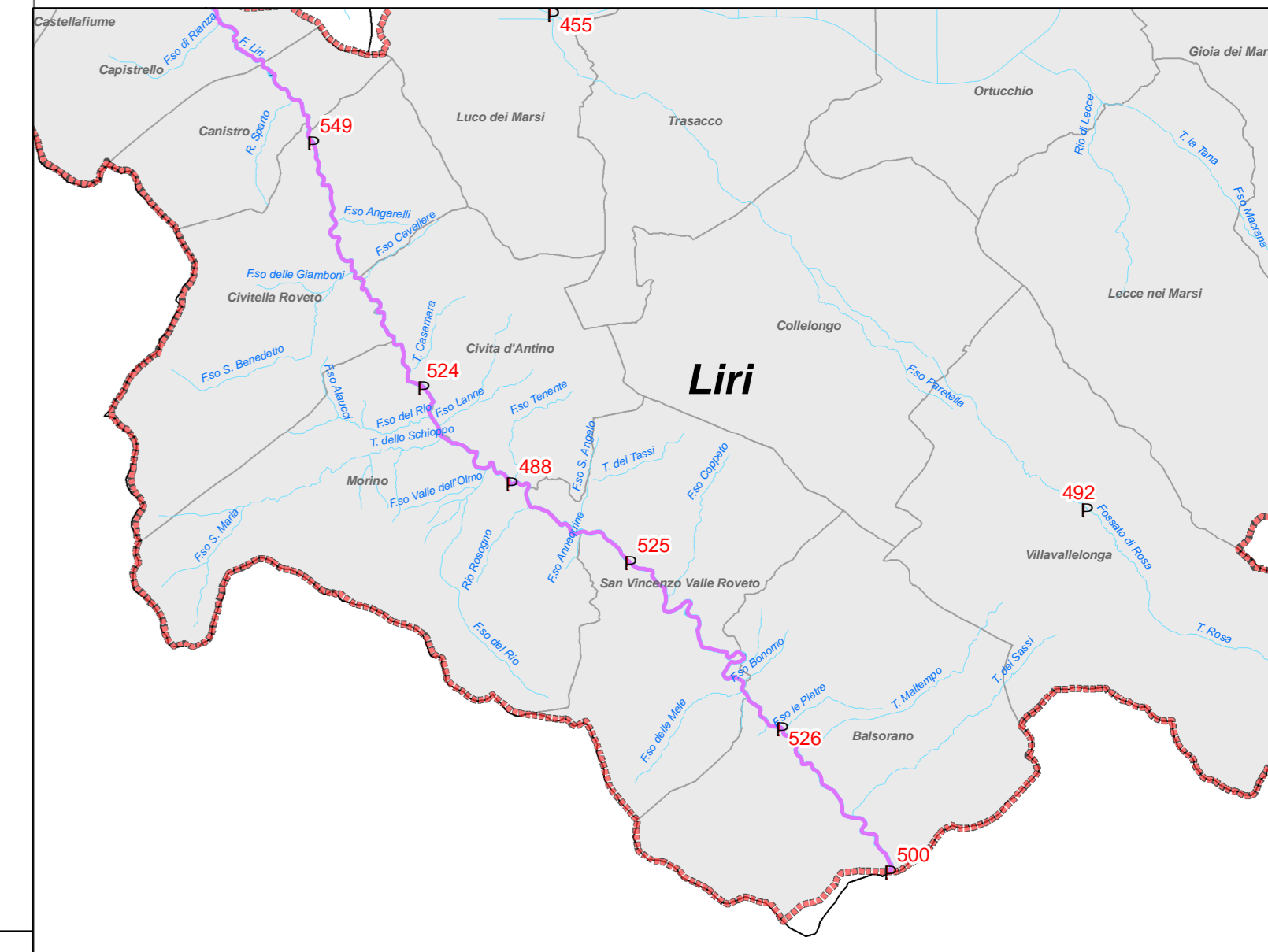
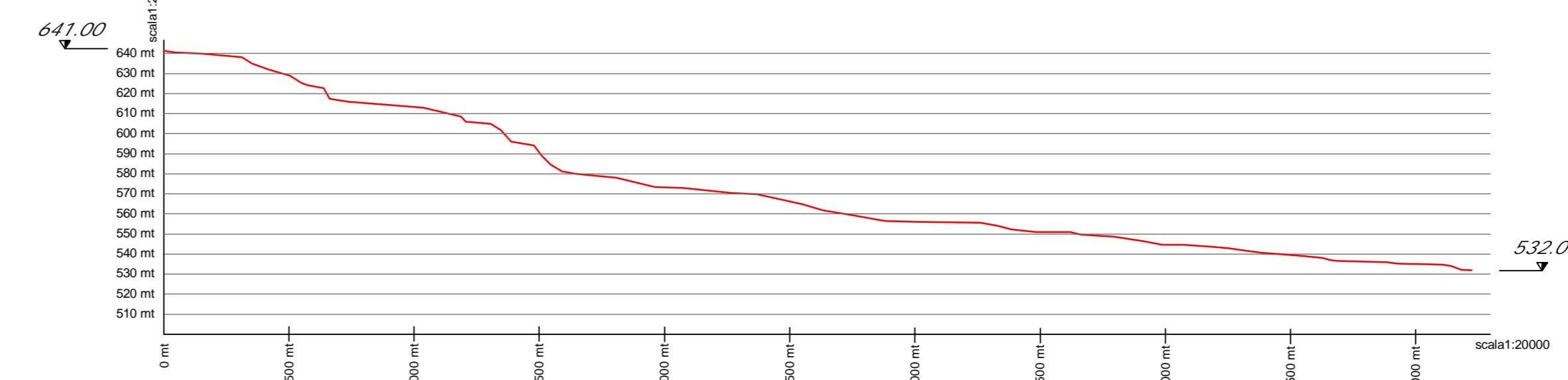


Inquadramento Planimetrico dei Rami in oggetto  
Scala 1:150.000

PROFILO nodo 523 - 453  
Salto mt. 16.00 Lunghezza mt. 1323.02

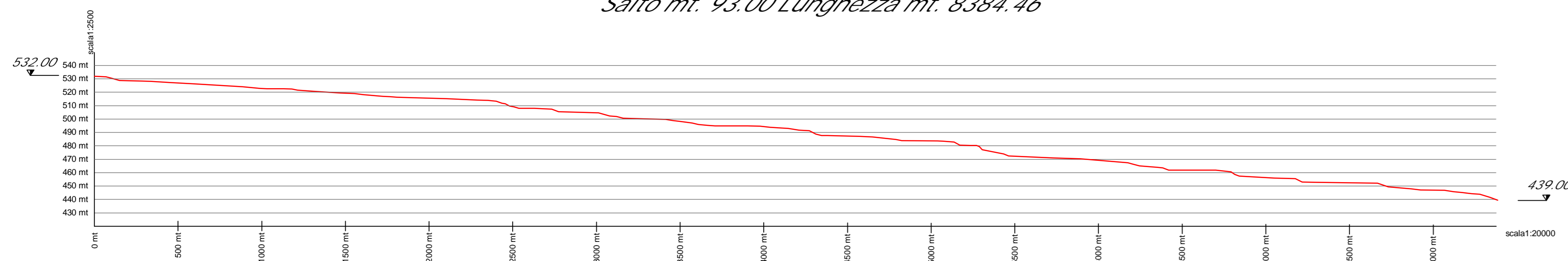


PROFILO nodo 453 - 549  
Salto mt. 109.00 Lunghezza mt. 5222.93

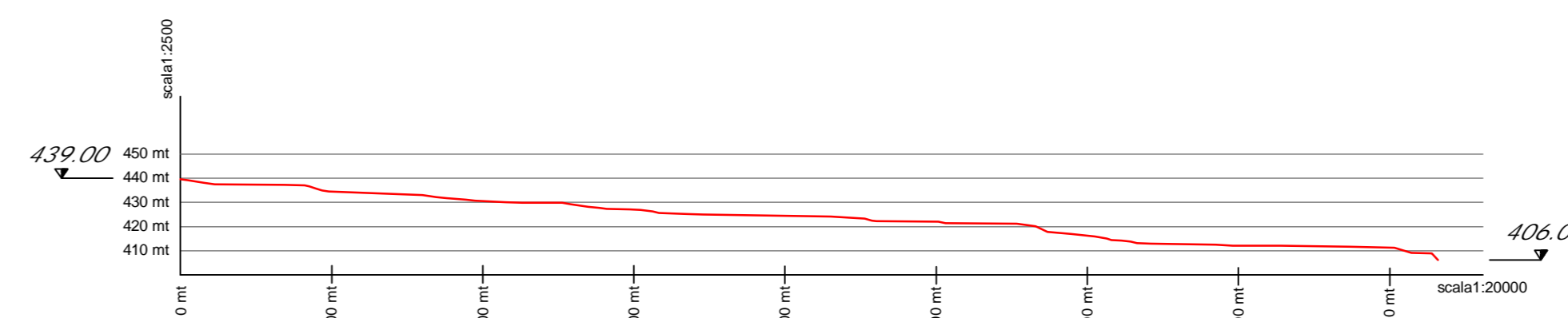


Inquadramento Planimetrico dei Rami in oggetto  
Scala 1:150.000

PROFILO nodo 549 - 524  
Salto mt. 93.00 Lunghezza mt. 8384.46

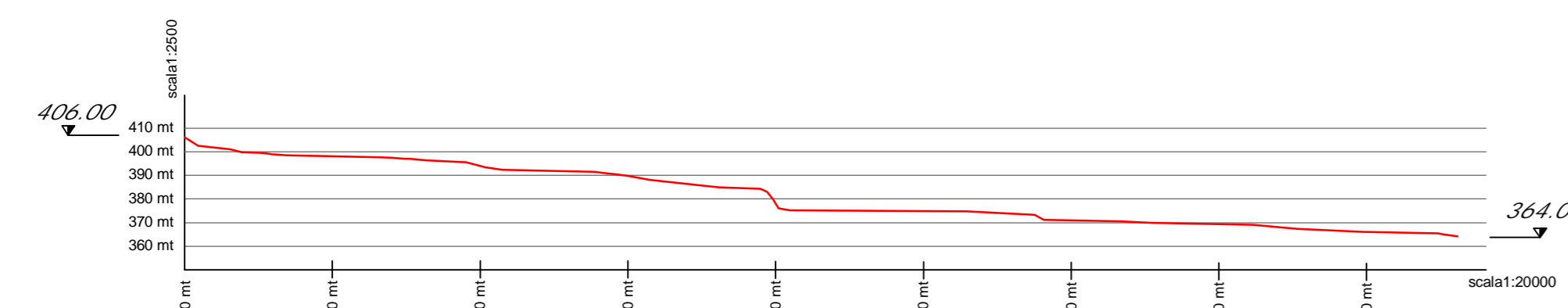


PROFILO nodo 524 - 488  
Salto mt. 33.00 Lunghezza mt. 4160.28

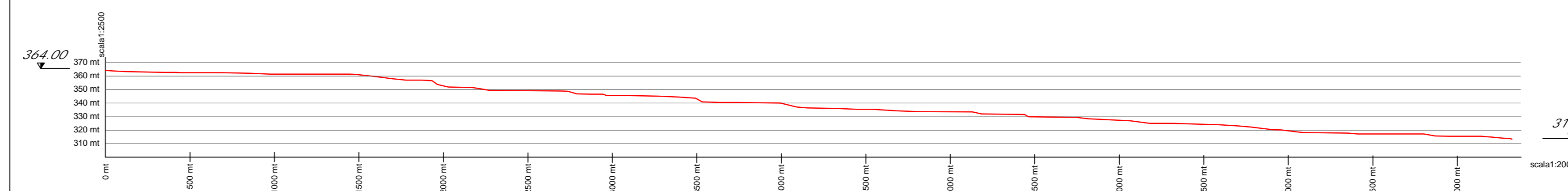


Inquadramento Regionale del Bacino del Fiume Liri  
Scala 1:1.000.000

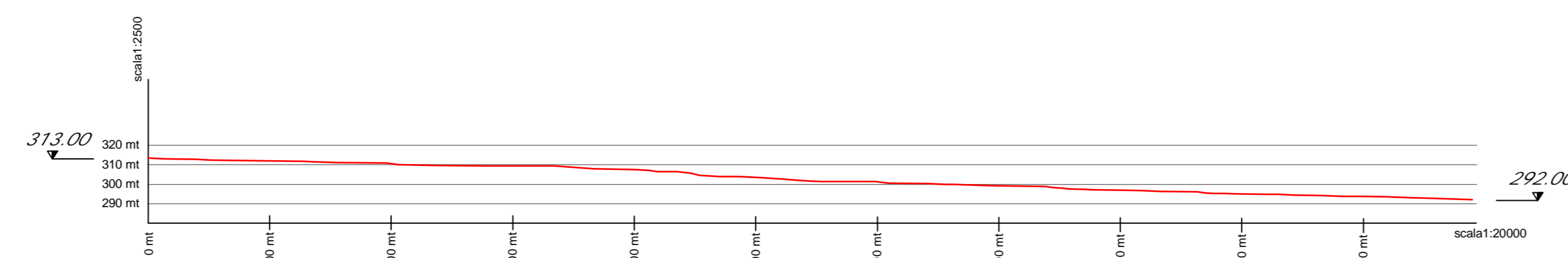
PROFILO nodo 488 - 525  
Salto mt. 42.00 Lunghezza mt. 4307.34



PROFILO nodo 525 - 526  
Salto mt. 51.00 Lunghezza mt. 8323.41



PROFILO nodo 526 - 500  
Salto mt. 21.00 Lunghezza mt. 5448.25



**REGIONE ABRUZZO**  
Direzione Parchi, Territorio, Ambiente, Energia

Studio a supporto della programmazione regionale in materia di risorse idriche destinabili alla produzione di energia elettrica

Profili Rami Individuati

3/3

scala: VARIE

**BACINO IMBRIFERO DEL LIRI**

Fonti:

Cartografia Regionale Ortofoto 1:10000 e D.E.M.

