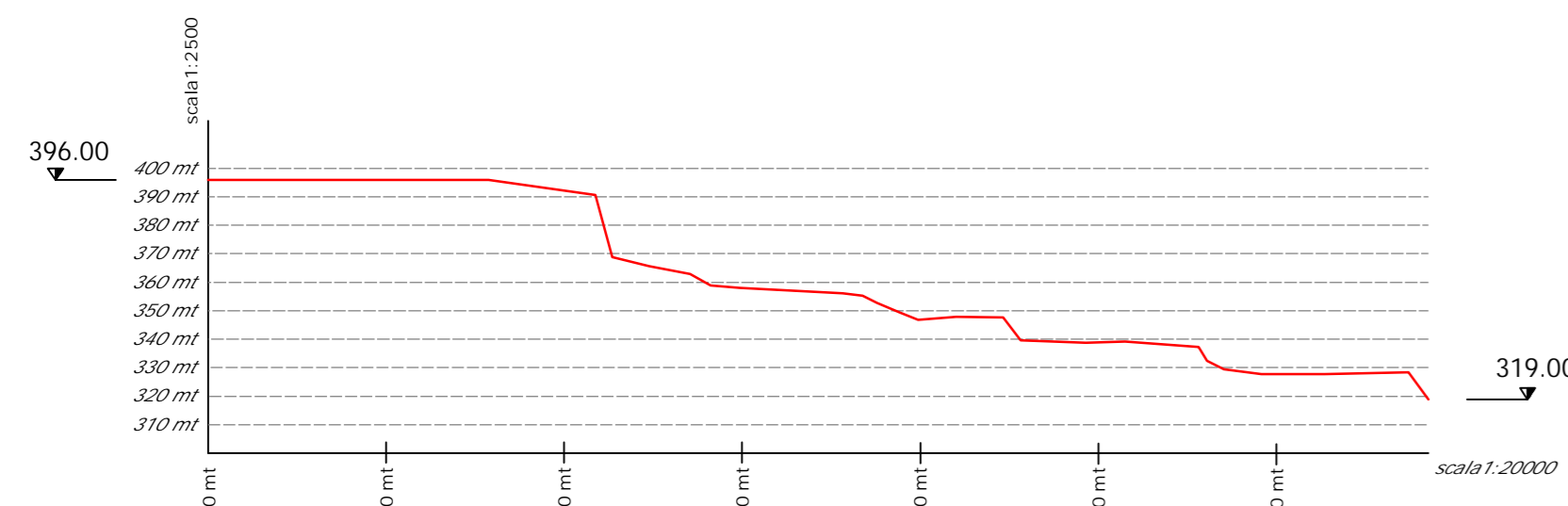
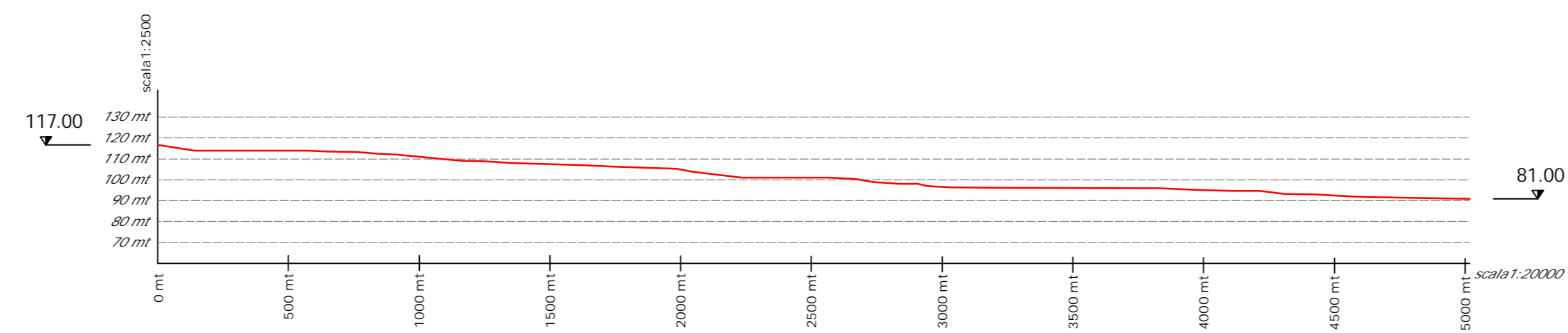


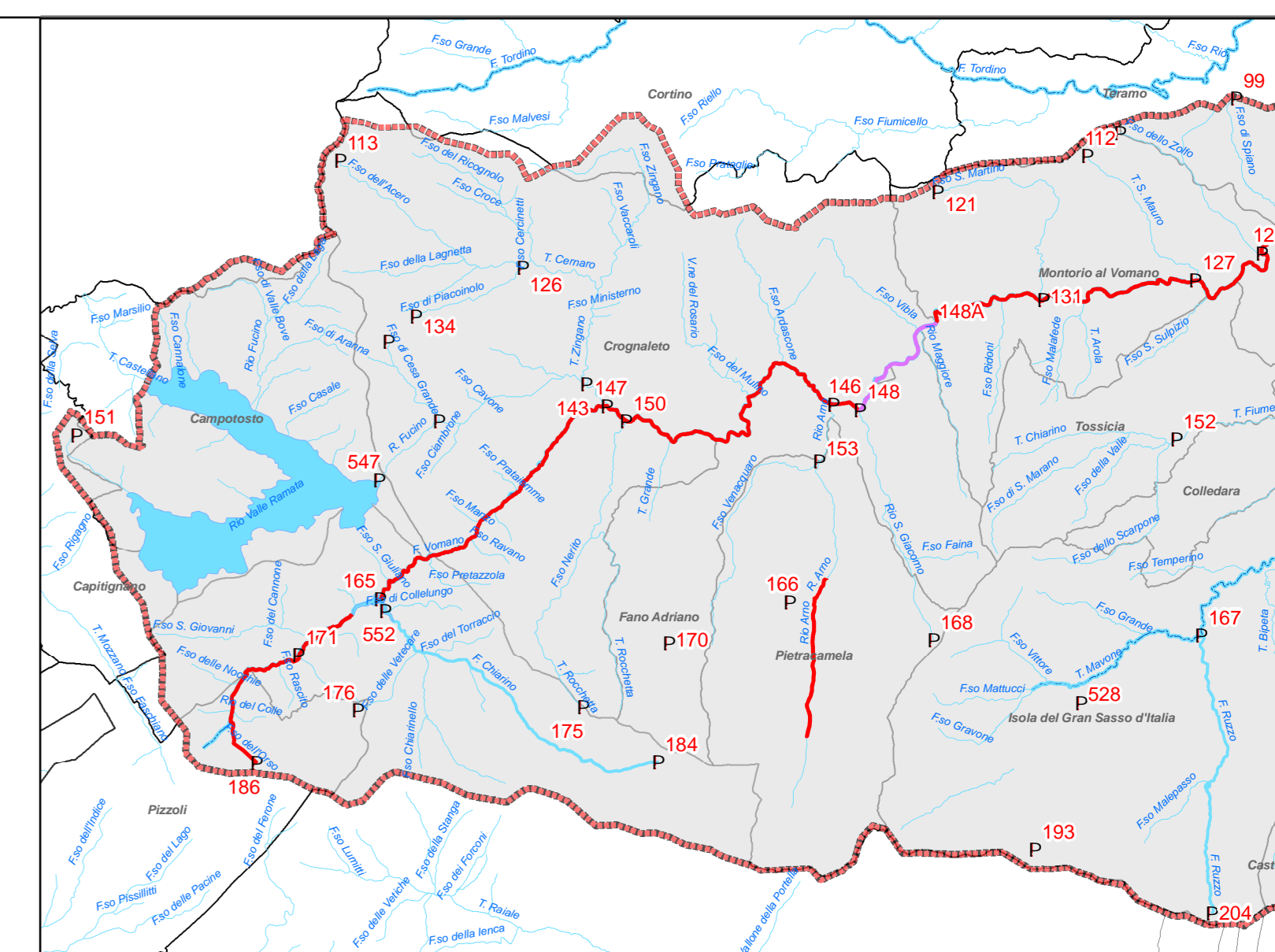
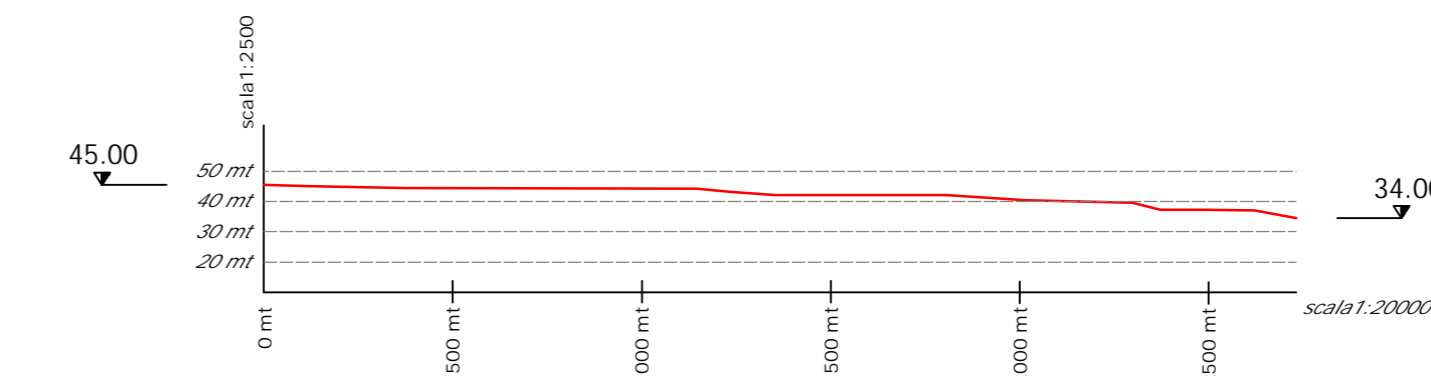
PROFILO nodo 148 - 148A  
Salto mt. 77.00 Lunghezza mt. 3425.71



PROFILO nodo 103 - 105  
Salto mt. 36.00 Lunghezza mt. 5016.72

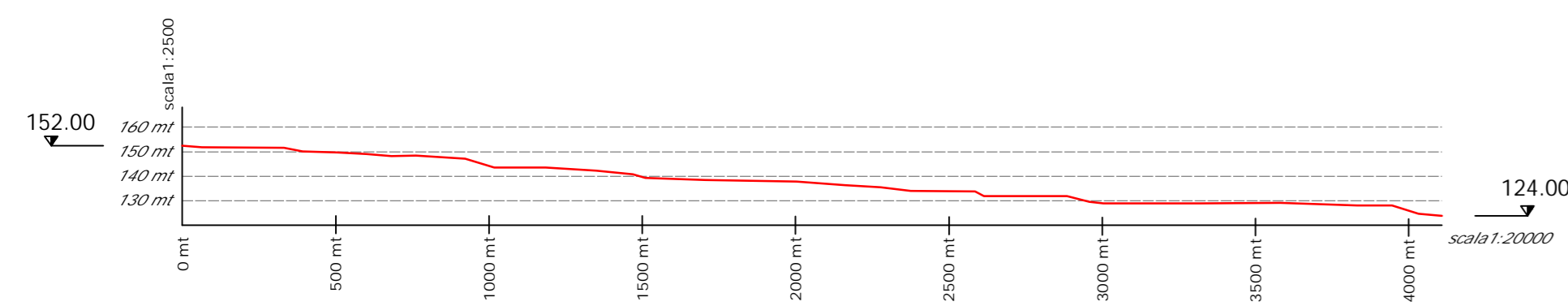


PROFILO nodo 102 - 101  
Salto mt. 11.00 Lunghezza mt. 2730.78

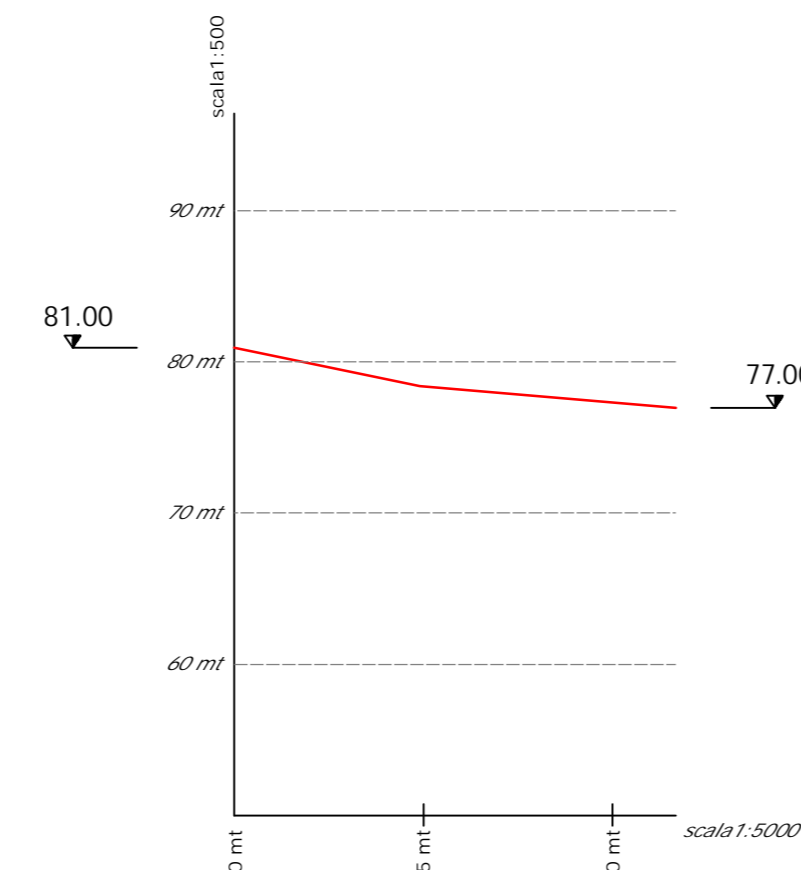


Inquadramento Planimetrico dei Rami in oggetto  
Scala 1:150.000

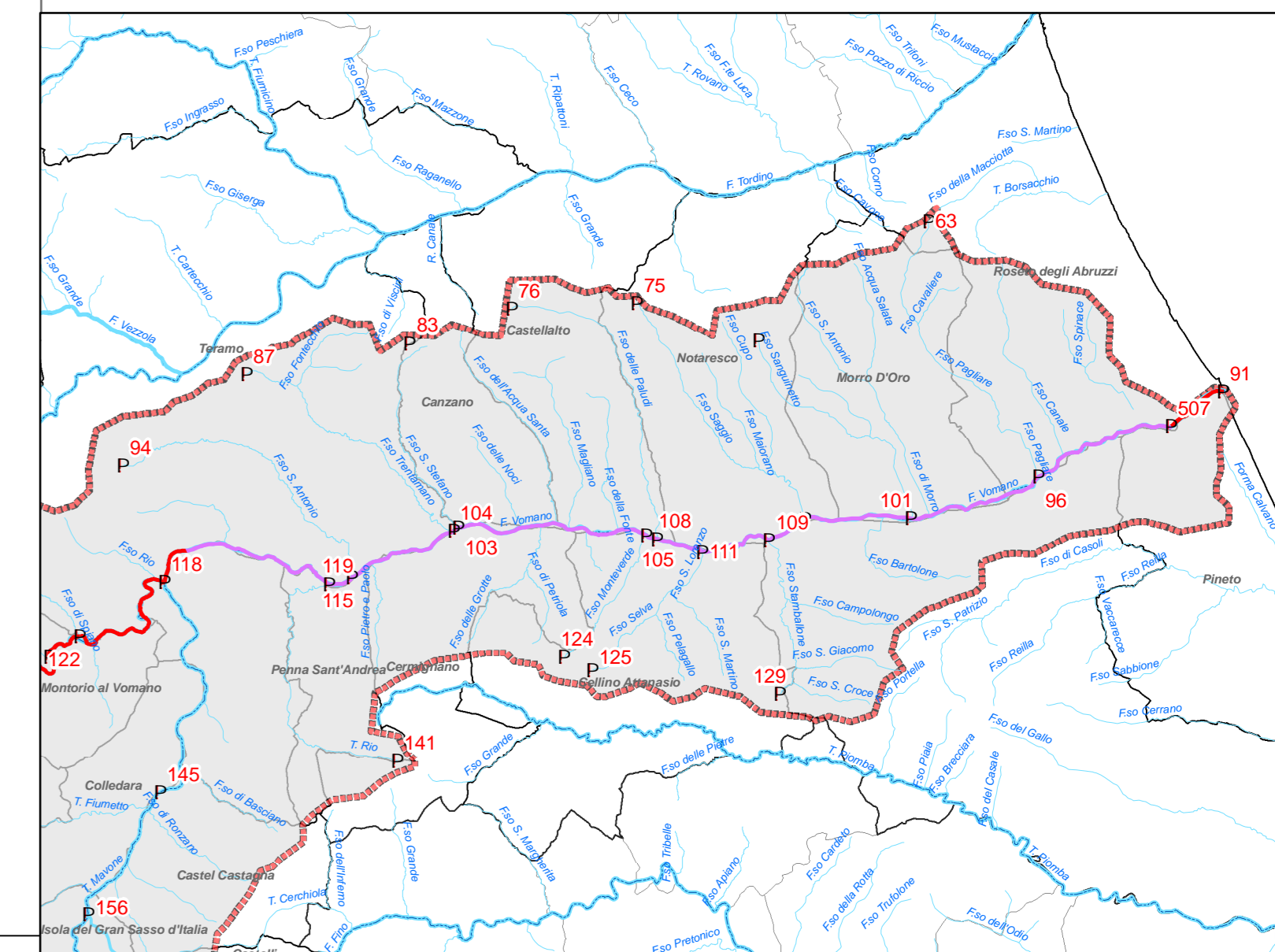
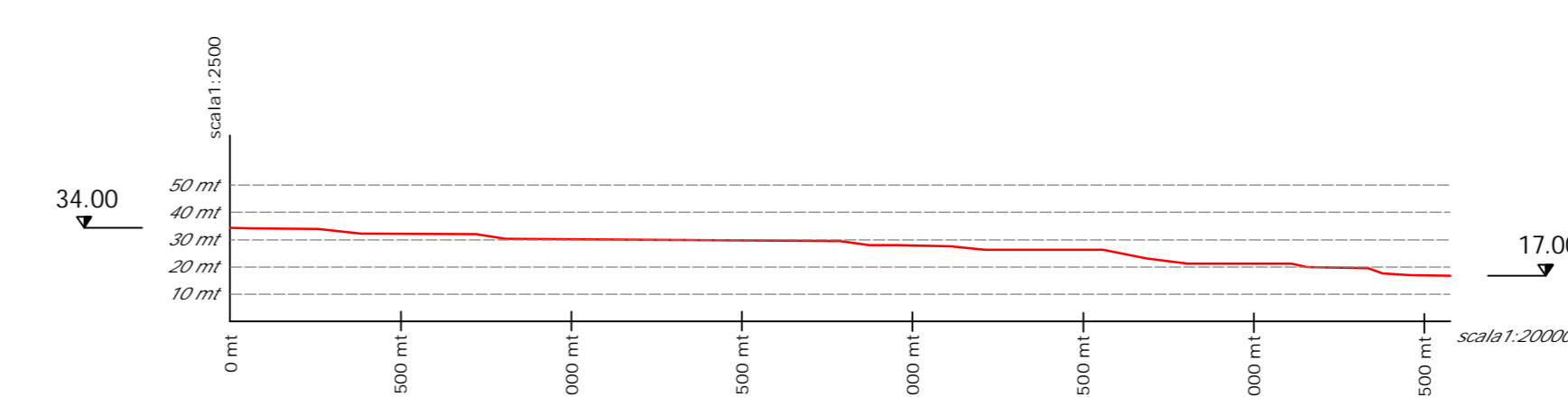
PROFILO nodo 118A - 119  
Salto mt. 28.00 Lunghezza mt. 4107.66



PROFILO nodo 105 - 108  
Salto mt. 4.00 Lunghezza mt. 292.16

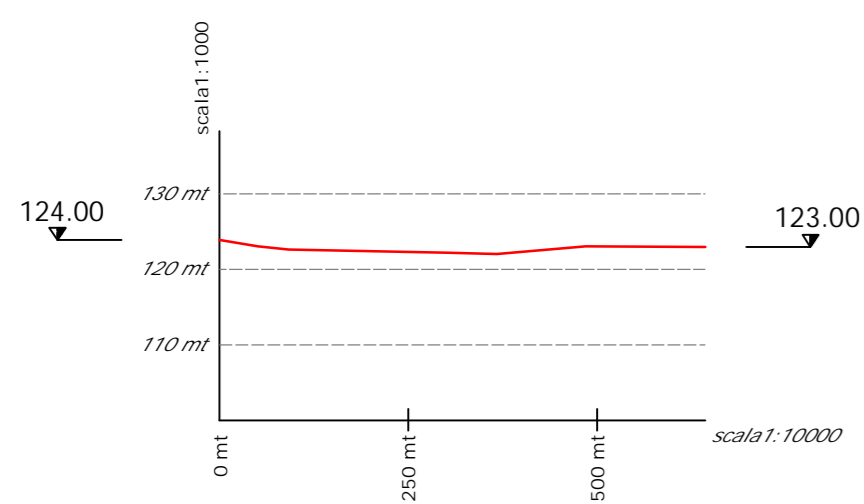


PROFILO nodo 101 - 96  
Salto mt. 17.00 Lunghezza mt. 3576.47

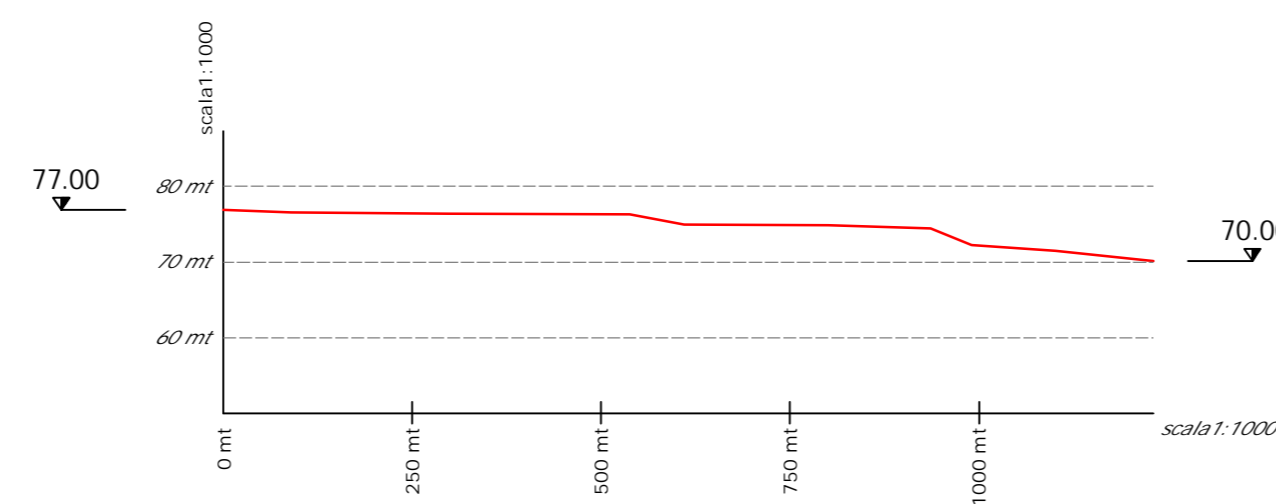


Inquadramento Planimetrico dei Rami in oggetto  
Scala 1:150.000

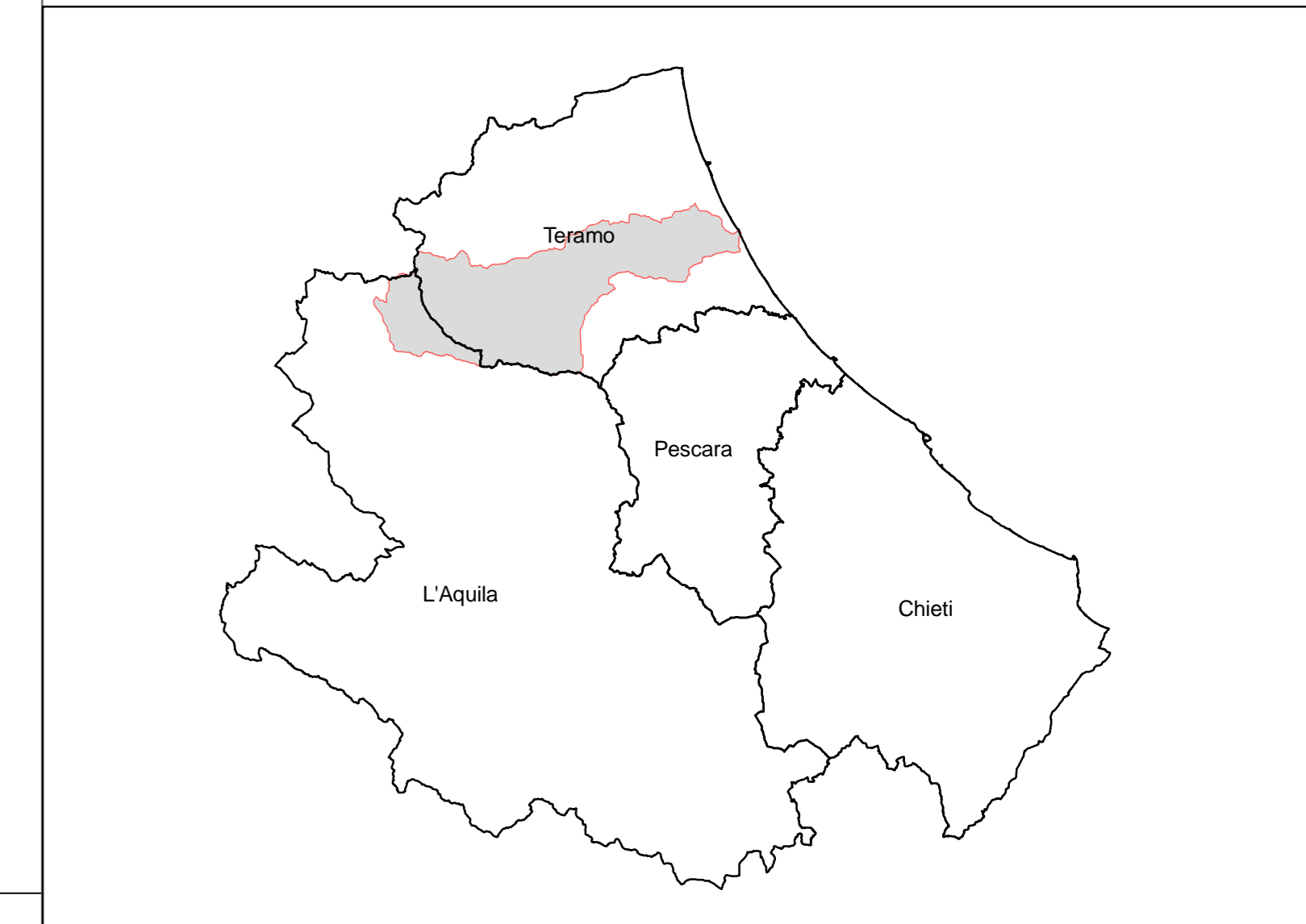
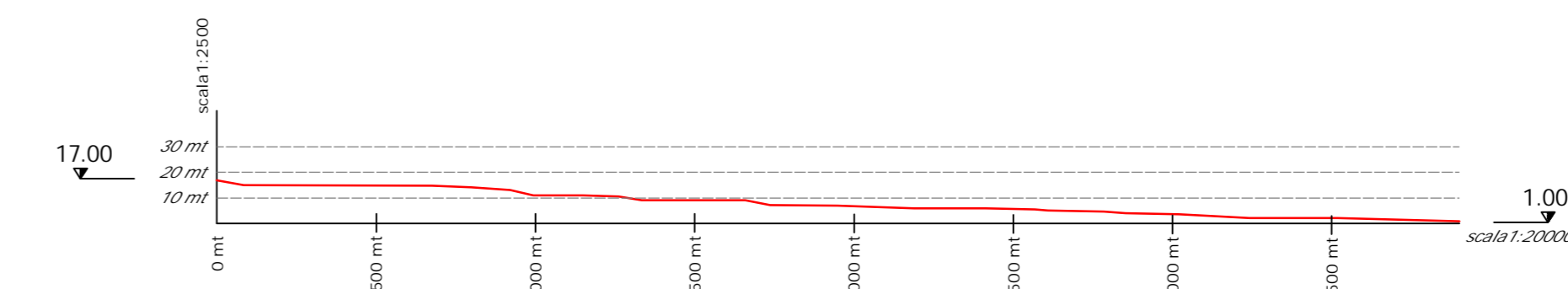
PROFILO nodo 119 - 115  
Salto mt. 1.00 Lunghezza mt. 642.73



PROFILO nodo 108 - 111  
Salto mt. 7.00 Lunghezza mt. 1230.66

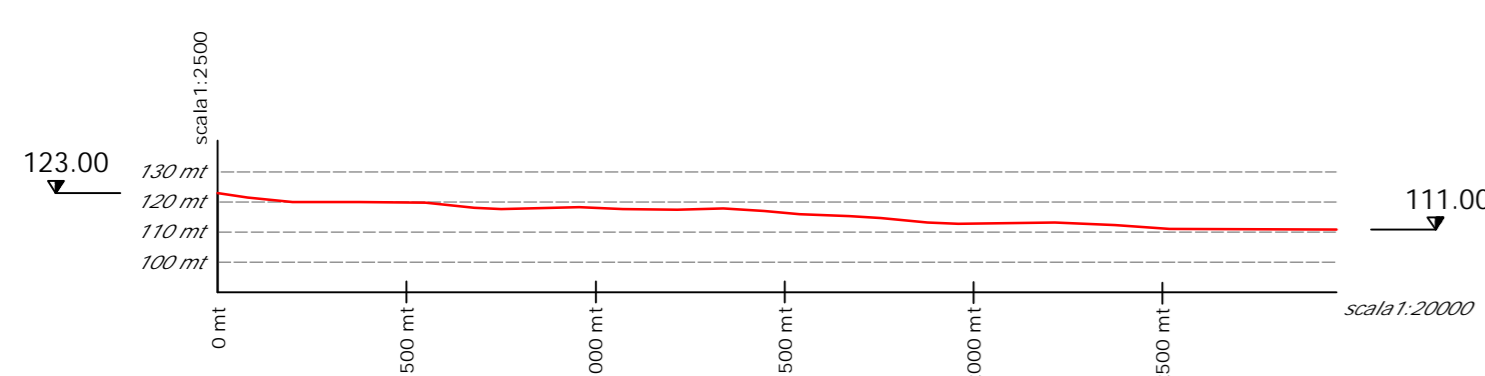


PROFILO nodo 96 - 507  
Salto mt. 16.00 Lunghezza mt. 3901.41

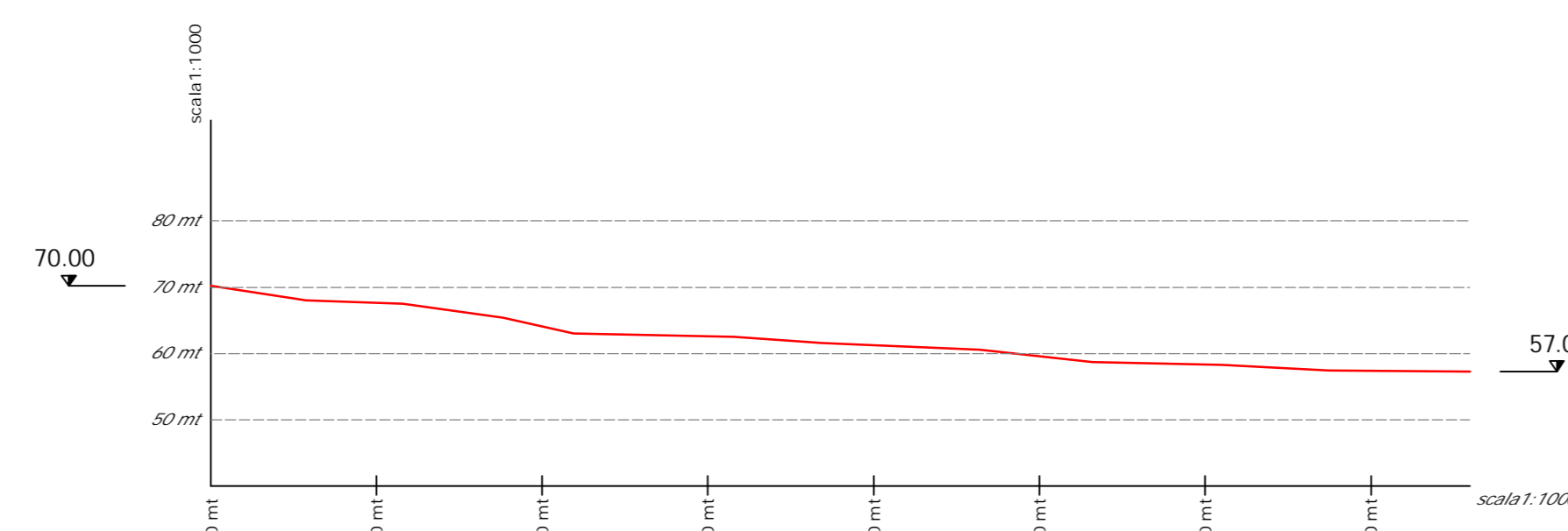


Inquadramento Regionale del Bacino del Fiume Vomano  
Scala 1:1.000.000

PROFILO nodo 115 - 104  
Salto mt. 12.00 Lunghezza mt. 2960.65



PROFILO nodo 111 - 109  
Salto mt. 13.00 Lunghezza mt. 1899.52



**REGIONE ABRUZZO**  
Direzione Parchi, Territorio, Ambiente, Energia

Studio a supporto della programmazione regionale in materia di risorse idriche destinabili alla produzione di energia elettrica

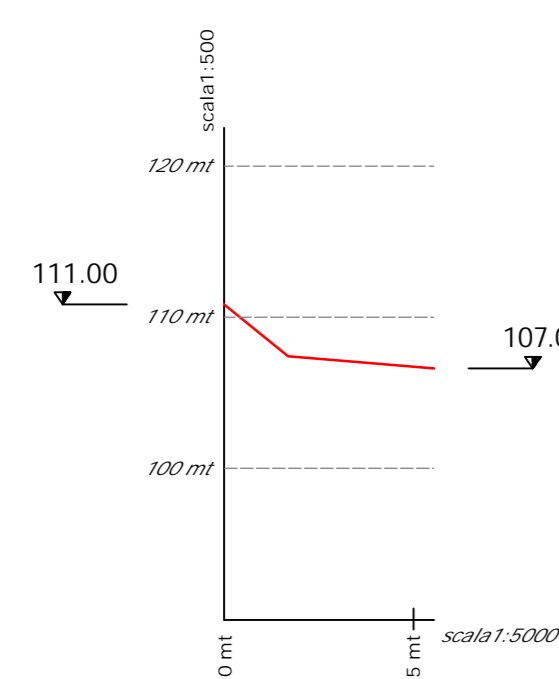
**Profili Rami Individuati**

3/3  
scala: VARIE  
**BACINO IMBRIFERO DEL VOMANO**

Fonti:  
Cartografia Regionale Ortofoto 1:10000 e D.E.M.



PROFILO nodo 104 - 103  
Salto mt. 4.00 Lunghezza mt. 138.79



PROFILO nodo 109 - 102  
Salto mt. 12.00 Lunghezza mt. 1097.73

