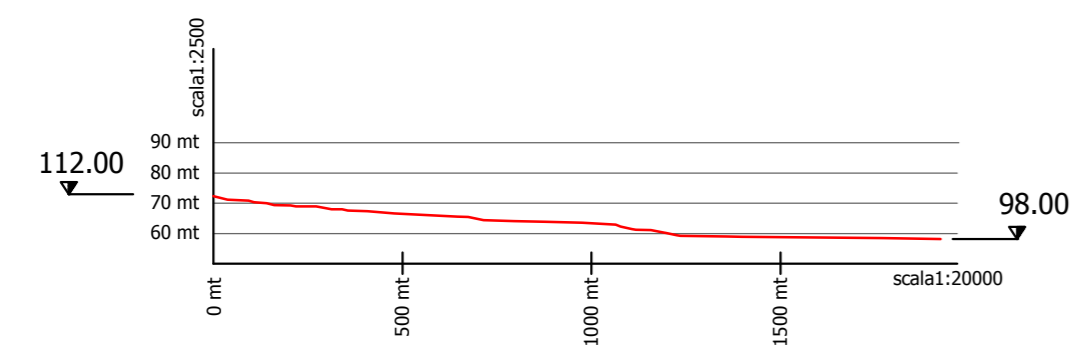
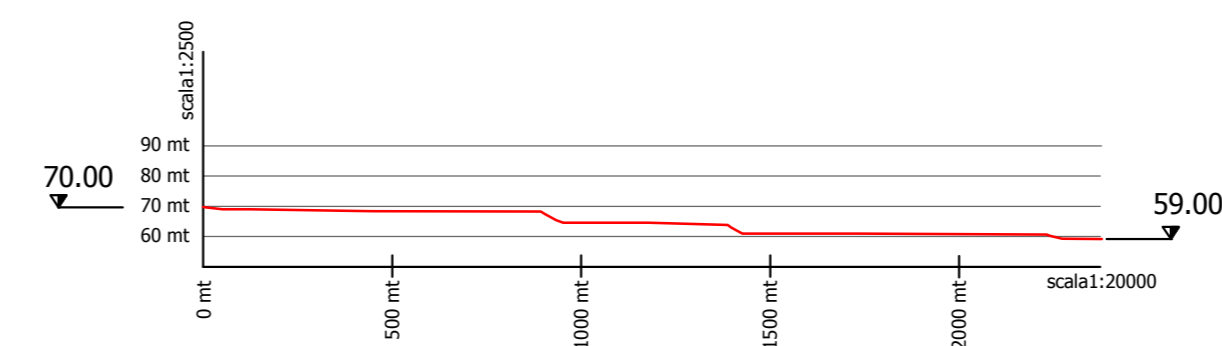


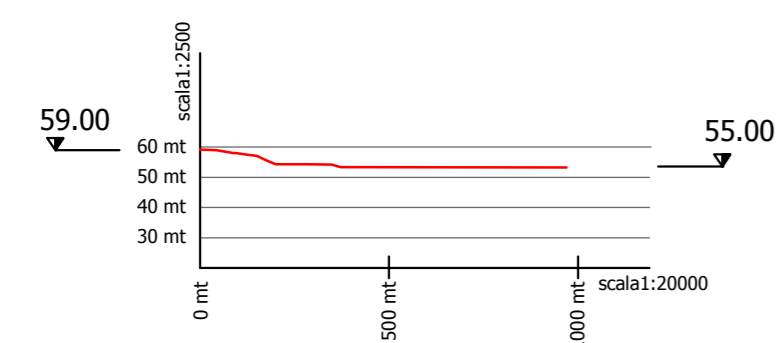
PROFILO nodo 384 - 384A  
Salto mt. 14.00 Lunghezza mt. 1923.71



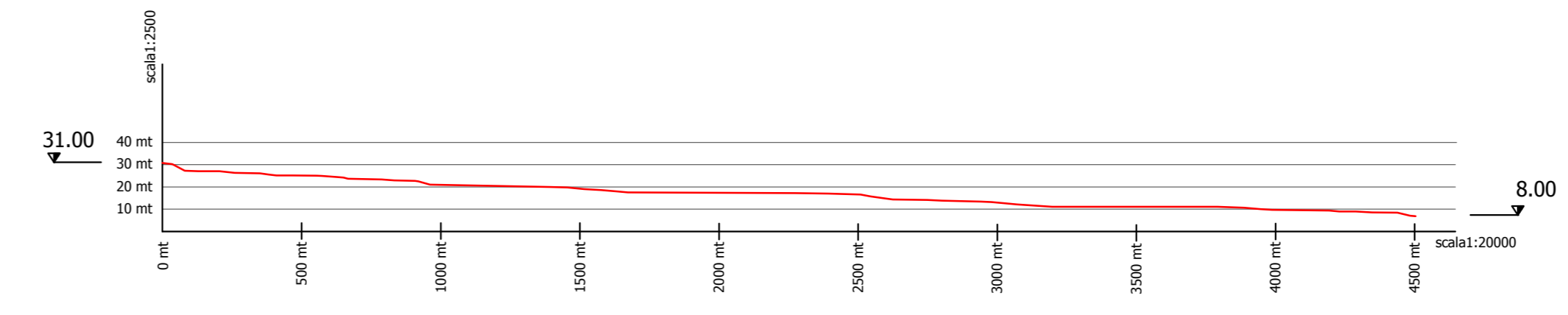
PROFILO nodo 371 - 366  
Salto mt. 11.00 Lunghezza mt. 2377.18



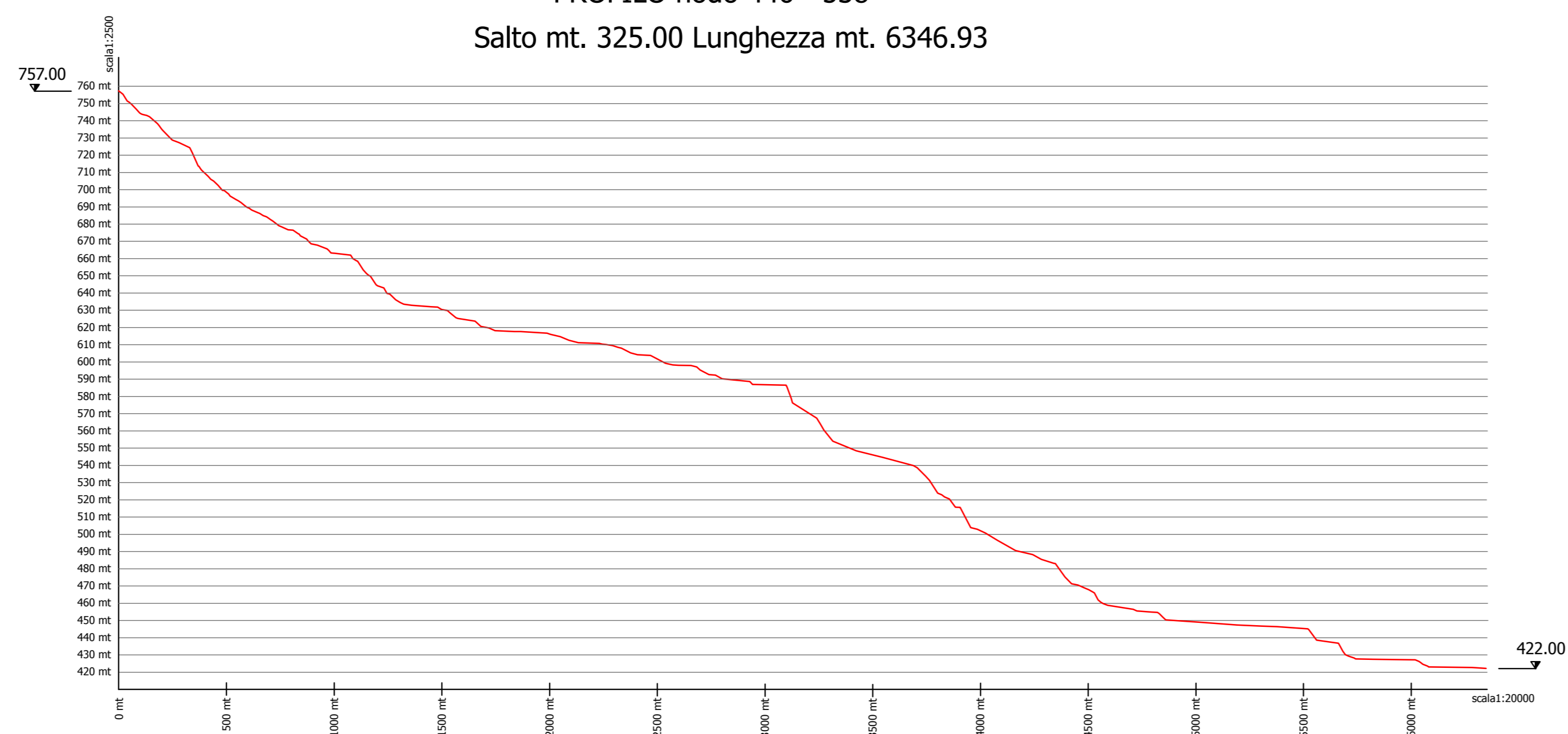
PROFILO nodo 366 - 366A  
Salto mt. 4.00 Lunghezza mt. 970.14



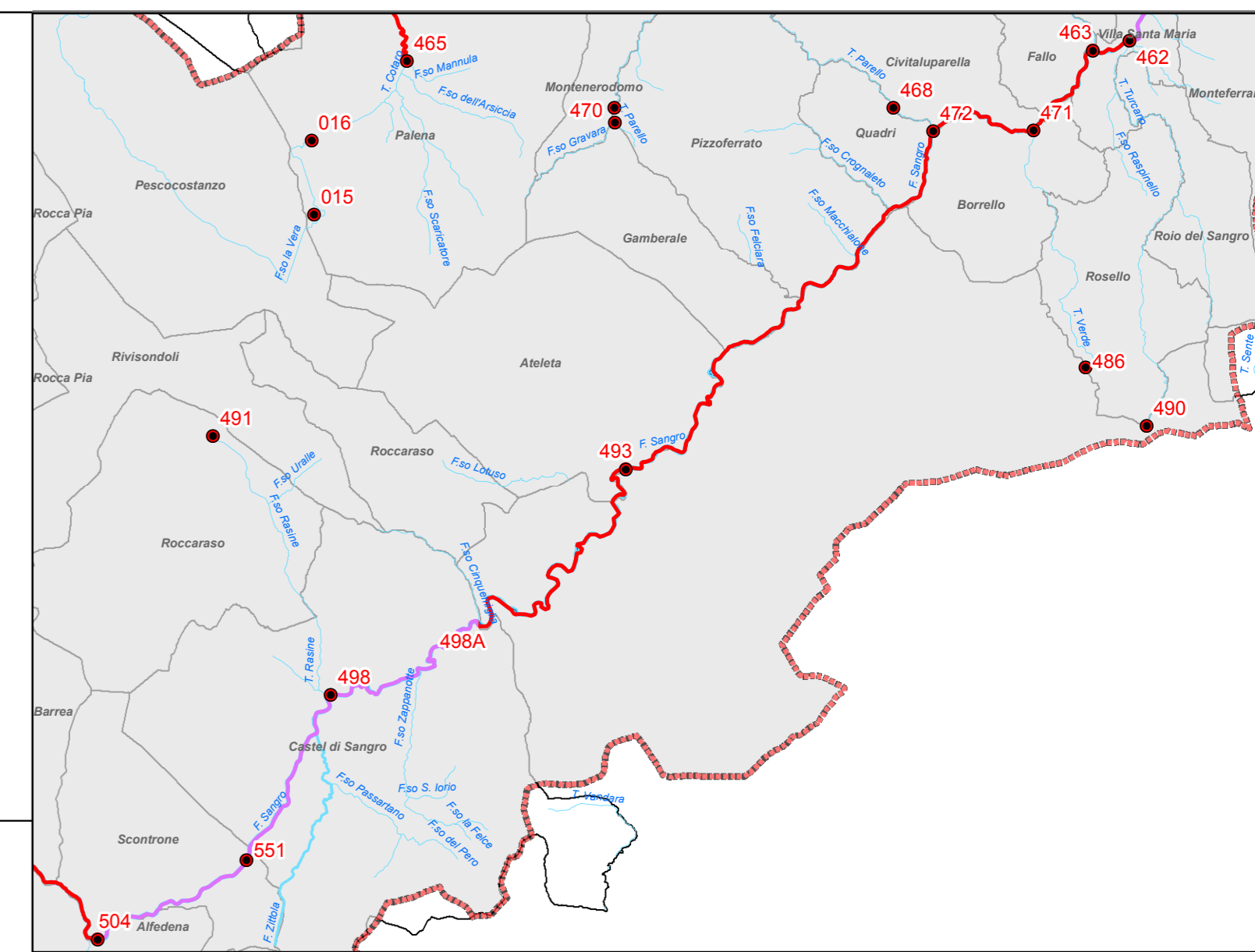
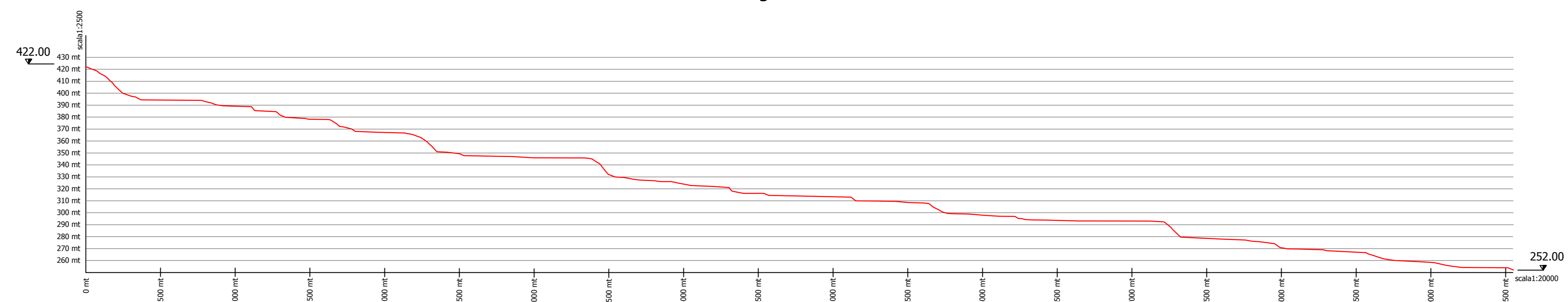
PROFILO nodo 345A - 517A  
Salto mt. 23.00 Lunghezza mt. 4422.00



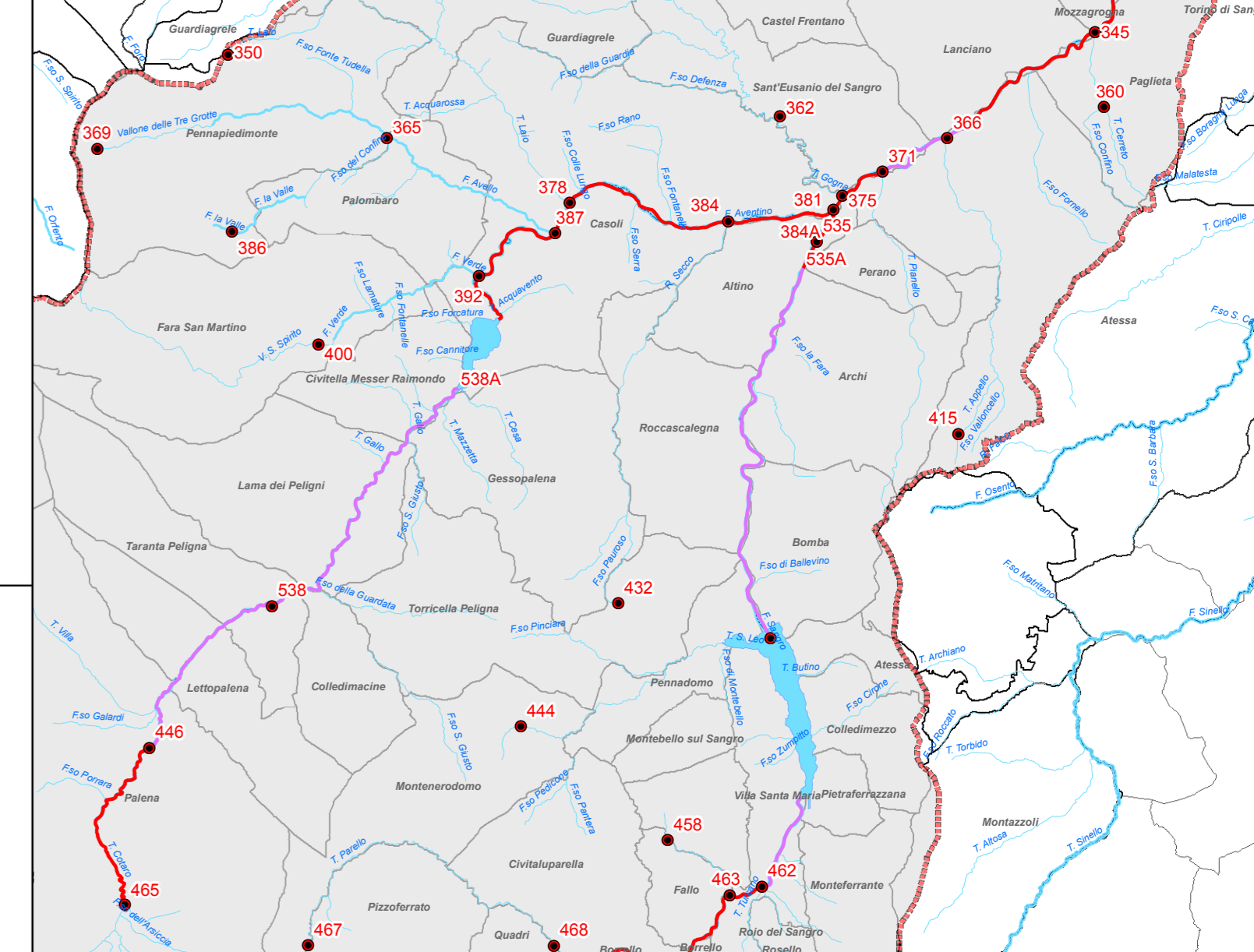
PROFILO nodo 446 - 538  
Salto mt. 325.00 Lunghezza mt. 6346.93



PROFILO nodo 538 - 538A  
Salto mt. 170.00 Lunghezza mt. 9551.81



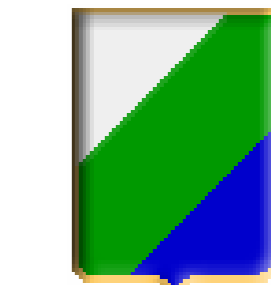
Inquadramento Planimetrico dei Rami in oggetto  
Scala 1:150.000



Inquadramento Planimetrico dei Rami in oggetto  
Scala 1:170.000



Inquadramento Regionale del Bacino Fiume Sangro  
Scala 1:1.000.000



**REGIONE ABRUZZO**  
Direzione Parchi, Territorio, Ambiente, Energia

*Studio a supporto della programmazione regionale in materia di risorse idriche destinabili alla produzione di energia elettrica*

**Profili Rami Individuati**

4/4

scala: VARIE

**BACINO IMBRIFERO DEL SANGRO**

Fonti:  
Cartografia Regionale Ortofoto 1:10000 e D.E.M.

Aggiornata a Dicembre 2008

